



IGNite

A Leadership Development Process
INSPIRE, GUIDE, NURTURE
TO
UNLOCK TEAM POTENTIAL



InspireOne
Performance, Inspired

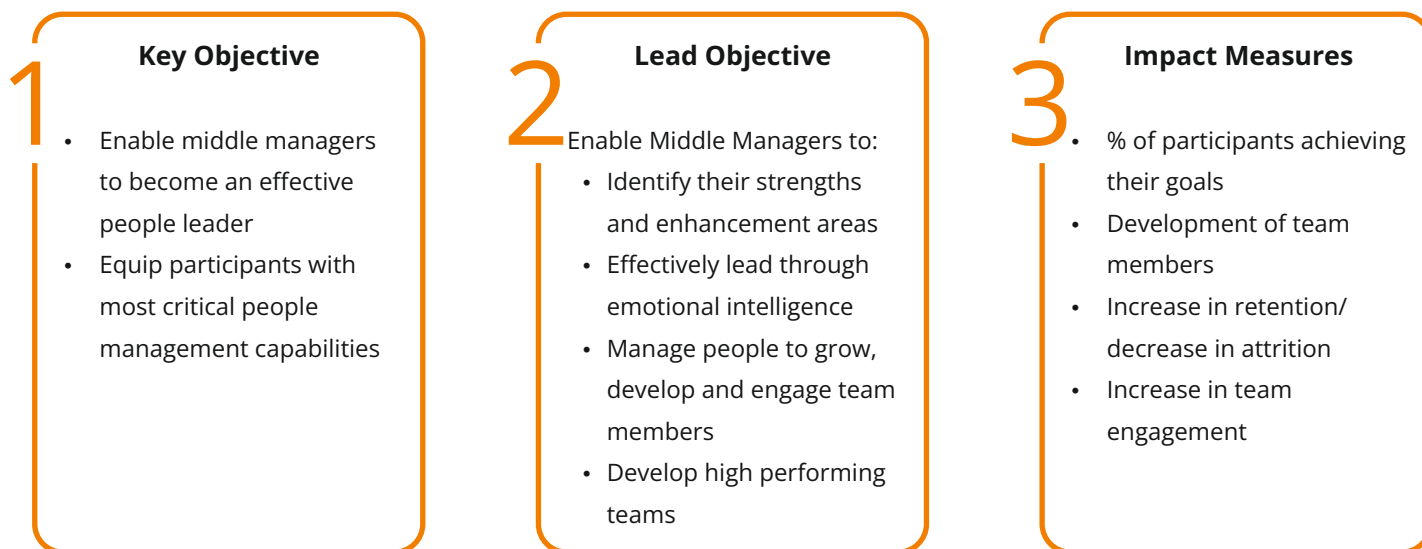
Challenges Of Middle Level Managers

Recently published Gartner research talks about an “unsettled” employee-employer relationship. The report highlights that employees are experiencing productivity/ career anxiety and there is mutual mistrust between Managers and employees. Therefore, there is a need to have more “Human Centric Managers”.

Managers today are therefore struggling with the paradox of being more empathetic but also need to drive performance. In short, organizations need great people managers who are able to seamlessly lead in this context. They need to IGNite talent and inspire them to unlock their potential.

IGNite is a Brandon Hall award winning program which equips your middle managers with most critical people leadership skills so that they can perform their role effectively. Our program has been created basis more than 25 years of practical experience and research in helping organizations develop better people managers.

Program Objectives and Success Measures

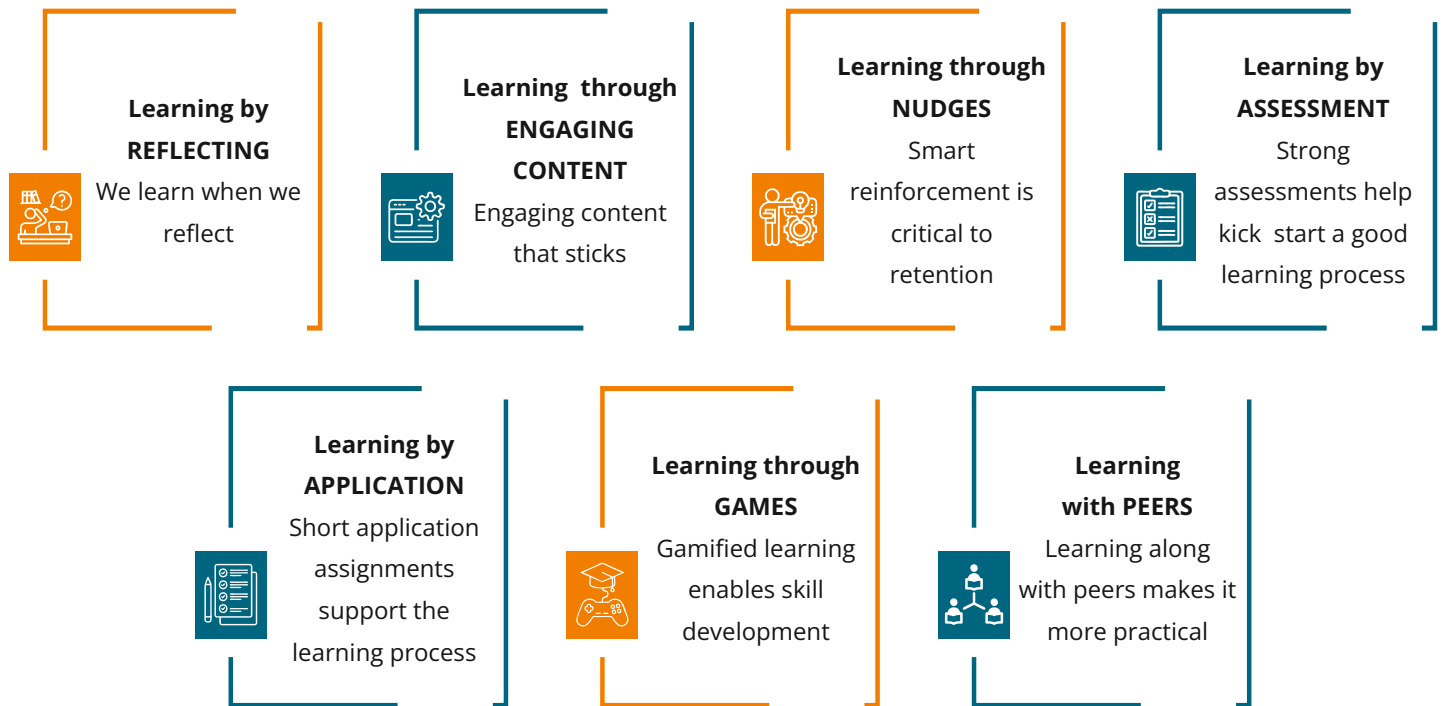


Key Themes Of The Program

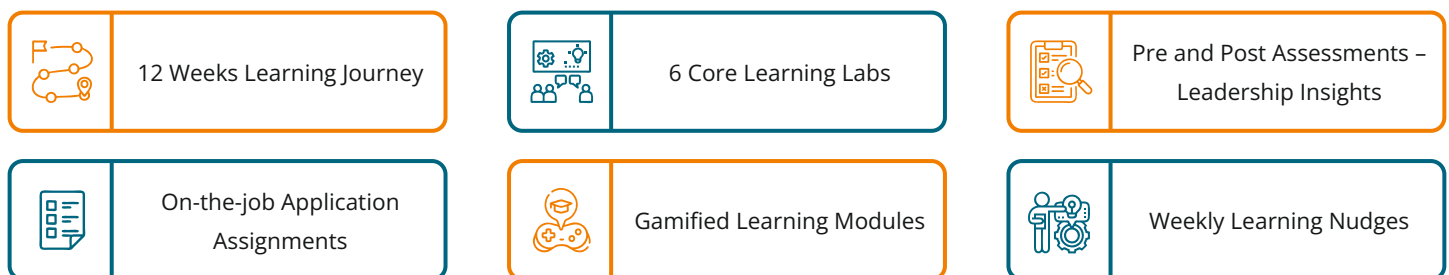
IGNite covers 3 key themes below. However, you can also choose themes from any of the other alternative modules as well.



Solution Design Principles



Program Components



Our Gamified Learning Platform Master-O®



Case Study

GLOBAL MANAGEMENT DEVELOPMENT INITIATIVE FOR A LEADING TELECOMMUNICATION COMPANY

A global telecommunication company, headquartered in the United Kingdom, wanted to roll out a global management development initiative to better support the people managers in its organization. We worked with the client to create a 20 weeks long virtual learning journey for more than 800 people managers. 4 virtual modules were developed and each virtual module consisted of learning labs, digital learning, application exercises and internal leader sessions. We provided the managers with the tools, skills, knowledge, and confidence to be able to thrive under challenging conditions.

IMPACT

- Internal mobility has already increased from 14% to 30%, already meeting the 2022 target.
- Employee engagement has increased from 80% to 86%, surpassing the 2022 stretch target.
- Female leadership representation has increased from 27% to 30%.

We Have Delivered Value For



About InspireOne

InspireOne is India's leading consulting firm offering organizational and leadership development solutions. With 25 years of experience in the consulting domain, we help organizations convert their people and organizational capabilities into corporate value.



Our solutions are developed on the research and know-how of our global partners - **Tack TMI**. We deliver solutions globally and in different languages.



Contact

Website: www.inspireone.in | Email: marketing@inspireone.in | Contact: +91 124 423 4531